

## USB driver installation

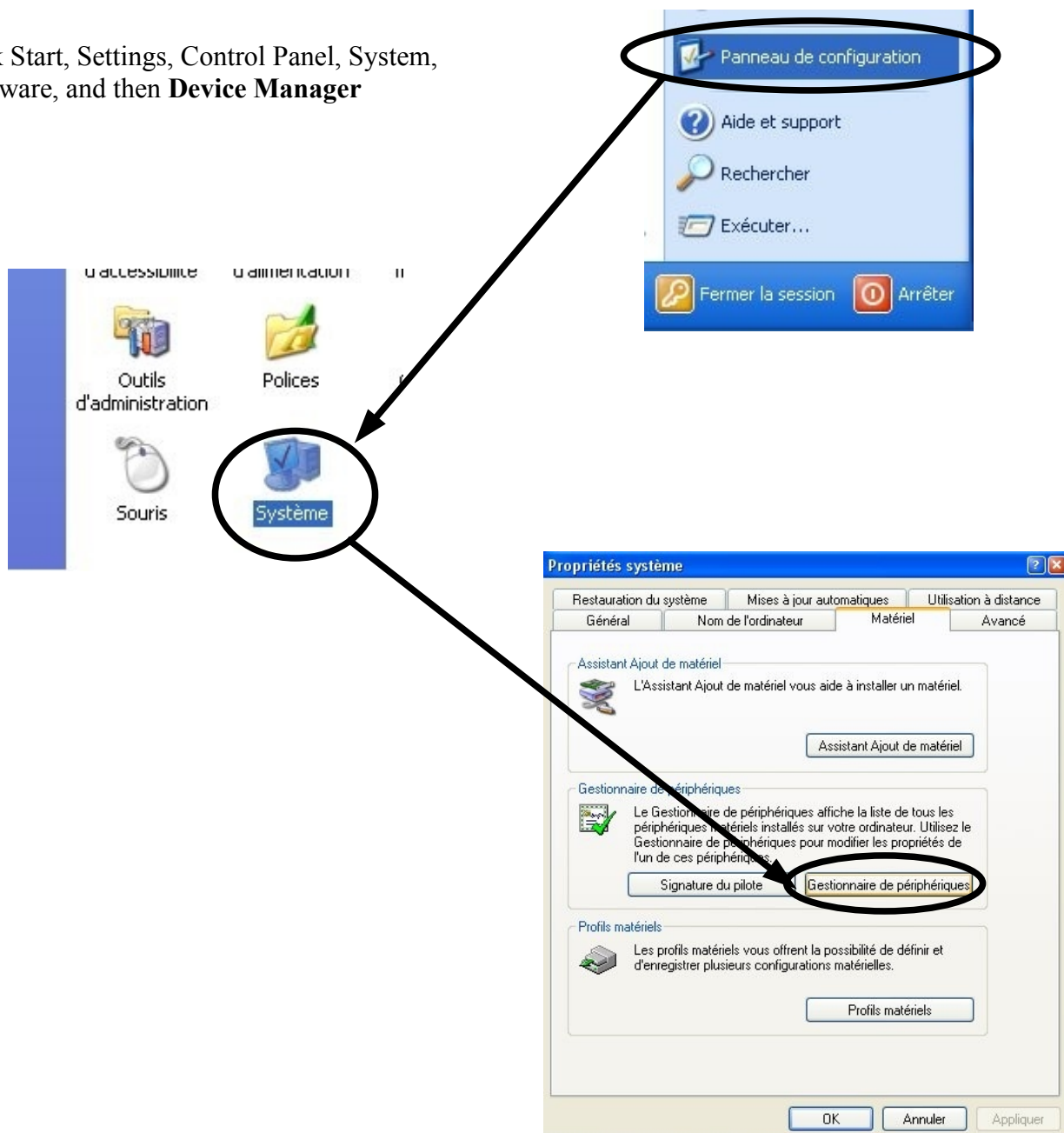
Use the installation executable.

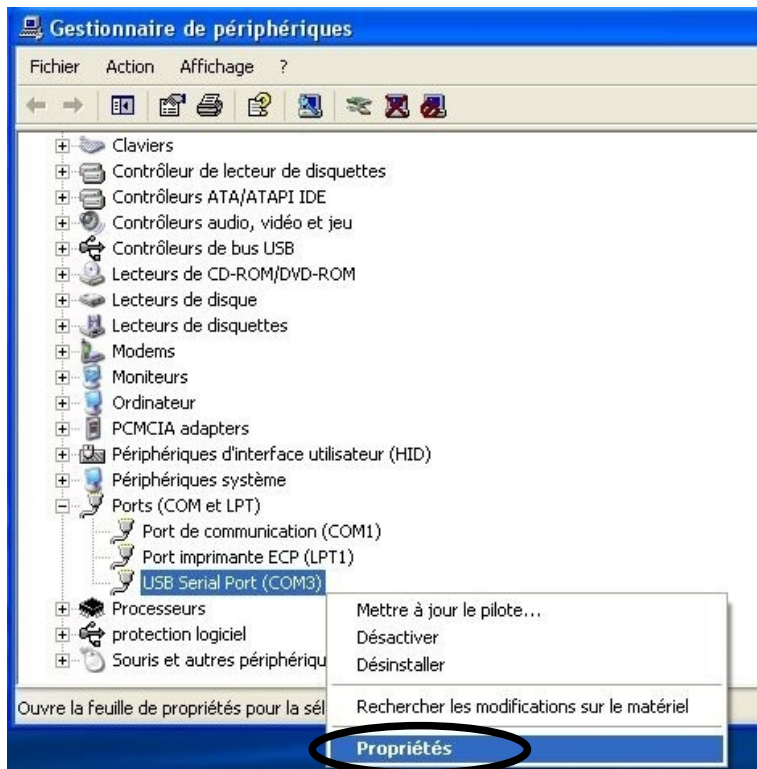
For windows XP & 2000 use: USB\_drivers\_setup.exe

For windows XPx64 use: USB\_drivers\_x64\_setup.exe

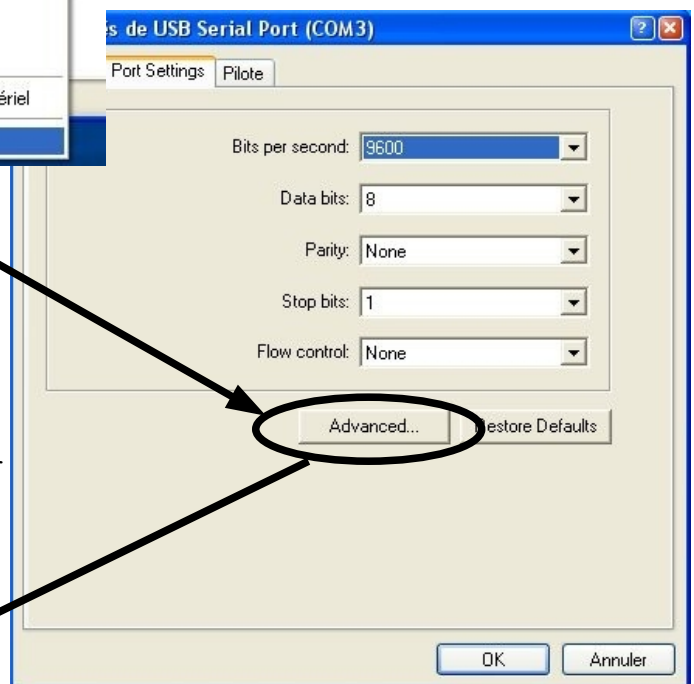
## Virtual Com Port setting

Click Start, Settings, Control Panel, System, Hardware, and then **Device Manager**





Click on the new **USB Serial Port**.  
Click on the **Port Settings** tab.



Click on Advanced. In most cases the wizard will have installed your new **USB Serial Port** as COM3 or COM4

Once you have configured a **COM port number** for your new USB Serial Port, make sure that you use this same COM port selection in your communication software.

